



# H7 SERIES <sup>TM</sup>

## Hemoglobin Analyzer



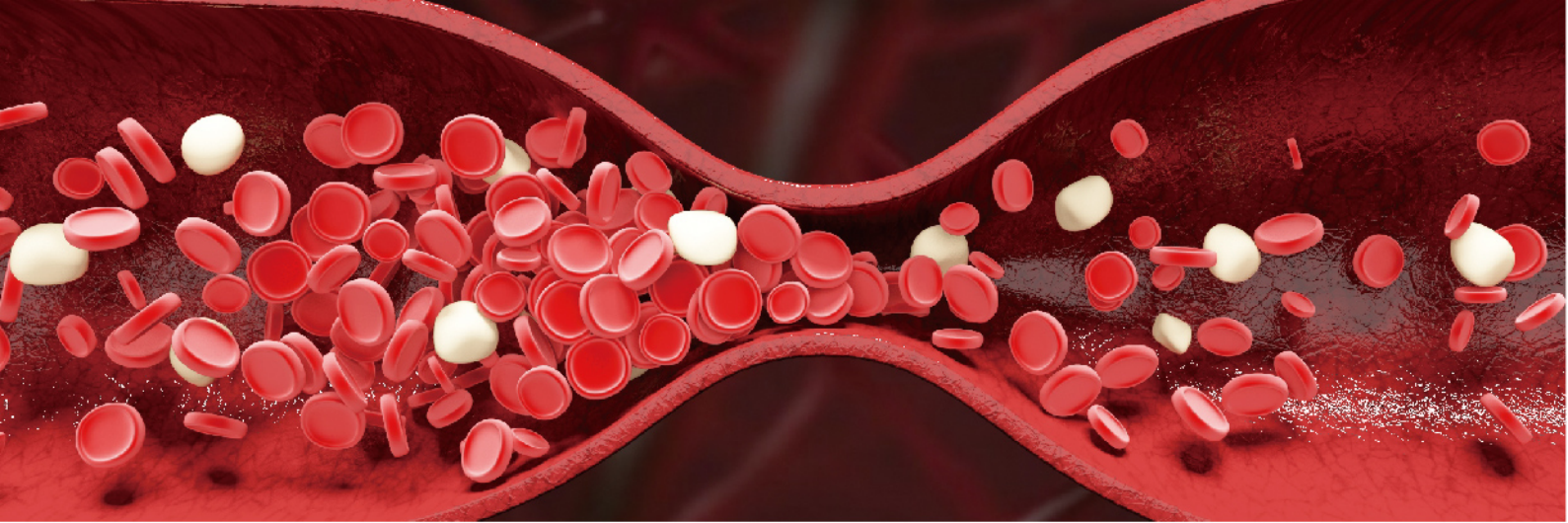
*Care Your Health See More Happiness*

[www.konsung.com](http://www.konsung.com)

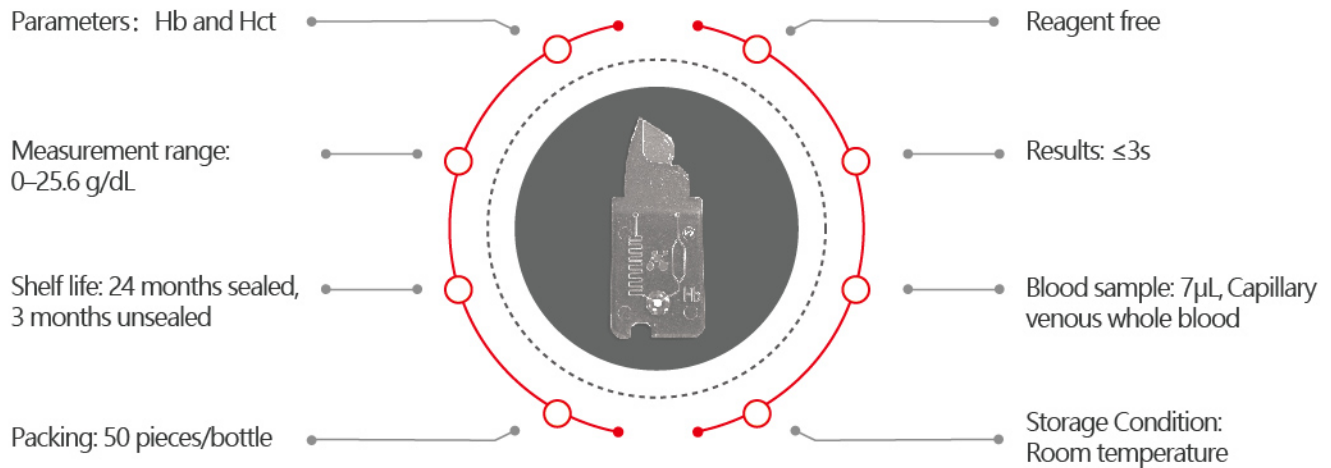
86-511-86375968 Email: [info@konsung.com](mailto:info@konsung.com)

**JIANGSU KONSUNG BIO-MEDICAL SCIENCE AND TECHNOLOGY CO.,LTD**





## HB Cuvette



## Analyzer Specifications

Principle	Microfluidic and spectrophotometry with scattering compensation technology	Operation environment	5°C~35°C ; $\leq 85\%$ RH
Calibration	Factory calibrated needs no further calibration	Interface	USB, Bluetooth, wifi, printer
Power supply	AC100~240V, 20VA DC 5V, 1A Built-in lithium battery	Measurement	130mm × 82mm × 31.5mm
Data storage	2000 test results	Weight	500g
Accuracy	CV $\leq 1.5\%$	Optional	Bluetooth printer APP

## Analyzer Features



7 $\mu$ L Blood



Disposable consumable



$\leq 3$ s testing time



CV  $\leq 1.5\%$



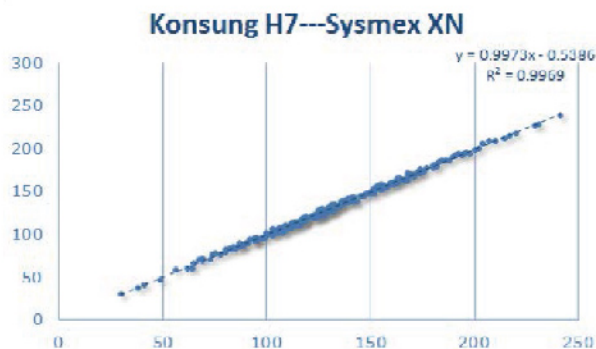
Built-in lithium battery



APP

### Conclusion:

There is sufficient evidence to conclude that there is a significant linear relationship between the test results from Konsung H7 and laboratory analyzers.



## Easy testing procedure



1. Fill the cuvette by placing the tip of the cuvette in the drop of blood.

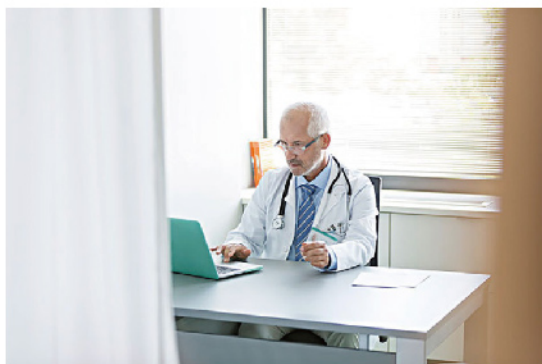


2. Place the filled cuvette in the cuvette holder and push it back.



3. Results appear in less than three seconds.

## Application Scenarios



### Clinics, family doctors:

For anemia screening and diagnosis.



### Chronic disease management:

Pharmacies and chronic disease management institutions provide long-term for patients with anemia.



### Bedside test:

To get patient testing data quickly and develop follow-up treatment plan for severe anemia.



### Initial screening of blood donors:

Applied in blood stations or blood donation vehicles for initial screening of blood donors.

## Ordering Information

Cat. No.	Description	Box Size (cm)	Pcs/box	N.W. (kg)	G.W.(kg)
H7	Hemoglobin analyzer	17.6×12.5×10.5	1	0.25	0.60
HB01-50	Hemoglobin Microcuvette	6.0×6.0×9.0	50	0.07	0.08

